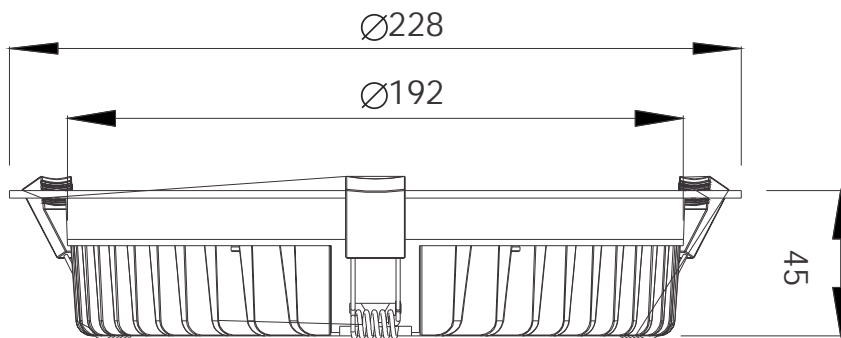


35 WATT OFFICE DOWN LIGHT



RoHS



35w Office Down Light

Technical Specifications

Model	Voltage	Power	Power Factor	Lumen (±5%)	Beam angle	CCT	Lifespan	CRI	Dimmable	Dimension
OFFICE-35W-CW	AC100-240V	35W	≥0.9	3500	90°	5700K	40000hs	≥80	No	Ø228*45mm cutout 200-210mm

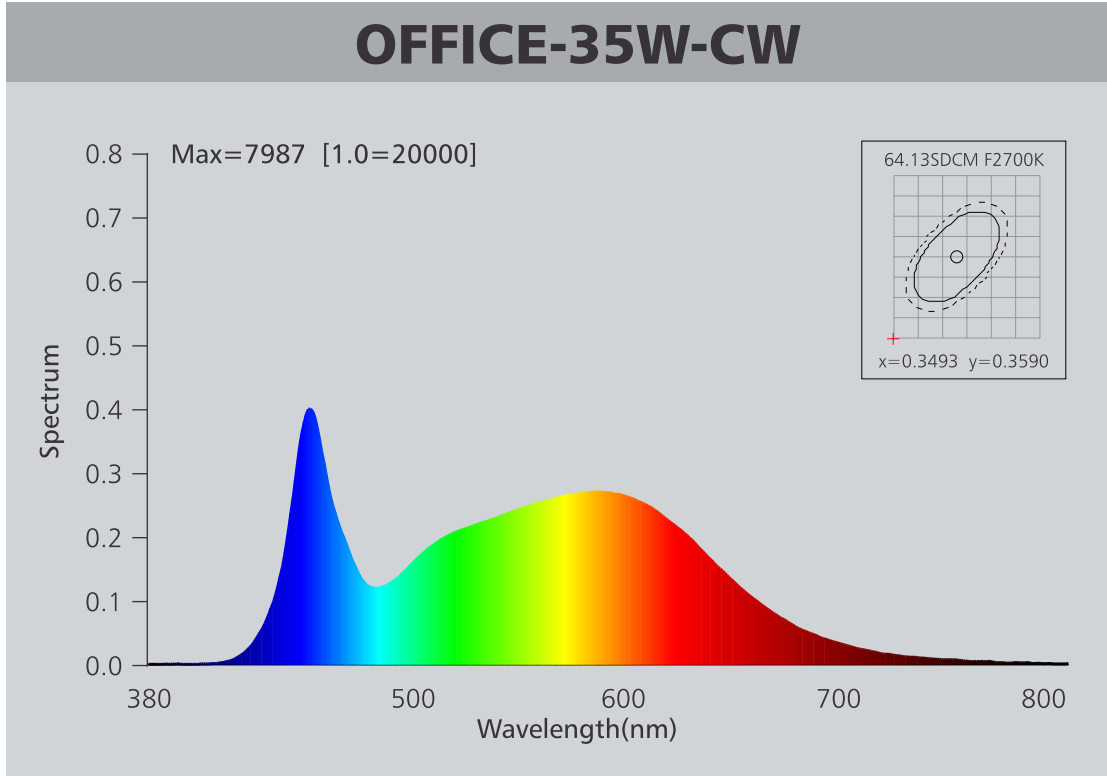
Driver data Sheet

Driver data	DIM	Non-dim
Input Voltage	AC200-240V	AC100-240V
Frequency	50HZ	50-60HZ
Input rated Voltage	AC230V	AC100-240V
Efficiency	≥80%	≥86%
No load wattage	≤1.5W	≤0.7W
Total load Wattage	25W±5%	25W±5%
Power Factor	≥0.9	≥0.9
Rated input current	≤0.15A	≤0.29A
No load output Voltage	DC45V	DC45V
No load output Voltage range	DC40-48V	DC40-48V
Full load output Voltage	DC29-31V	DC29-31V
Rated output current	700mA	700mA
Output current range	700mA±5%	700mA±5%
Tolerance	±5%	±5%
Current output tolerance	±5%	±5%
Dimming range	8%-100%	—
Dimmer	Triac dimmers	—
Withstand voltage	AC3750V	AC3750V

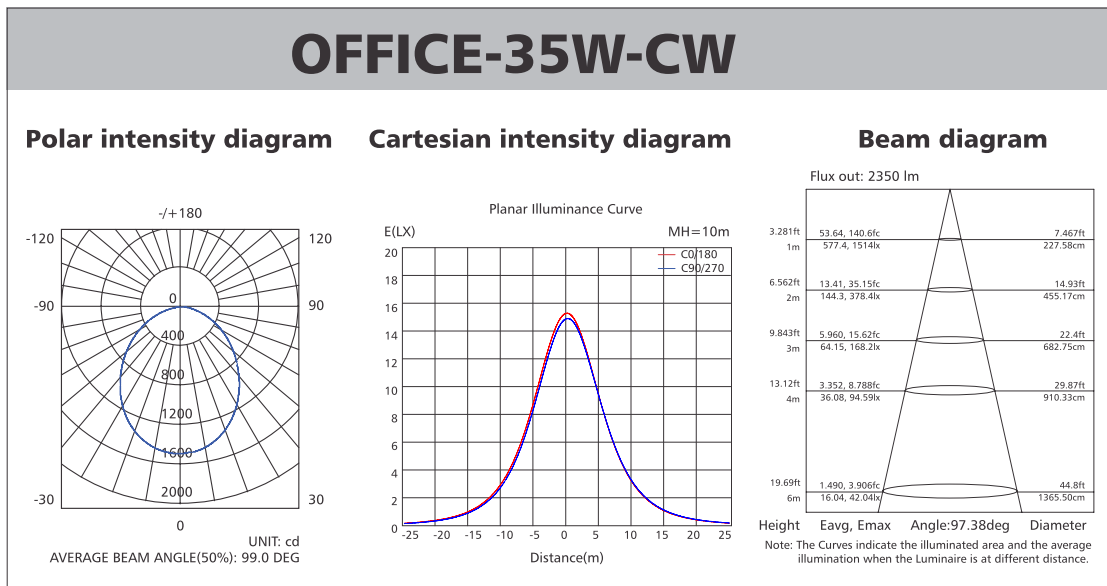
Fixture Compatibility

Rated Wattage	Electrical Classification	Ingress Protection (IP)	Operating Temp	Operating Humidity	Storage Temp
35w	II	20 / 44	-10°C-45°C	0-90%	-20°C-65°C

Spectral Distribution

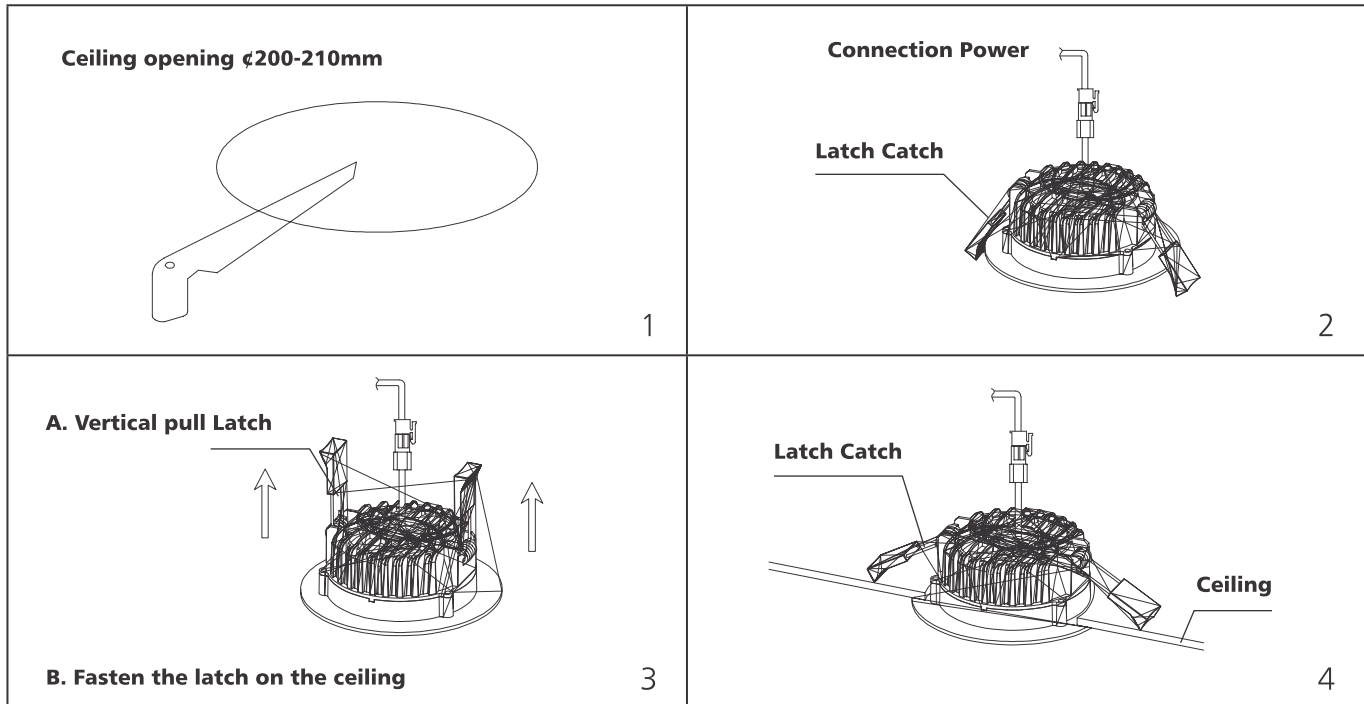


Photometric Diagram



35W Office Down Light

Installation



35W Office Down Light